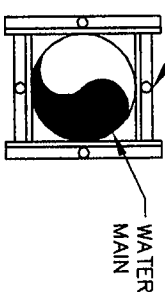


PROP. DBL. CHECK VALVE ASSEMBLY N.Y.S.H.D.
APPROVED DEVICE (SEE NOTE 2 BELOW) D.C.V. DEVICE IS
TO BE INSTALLED CLOSE TO WALL DIRECTLY AFTER
METER.

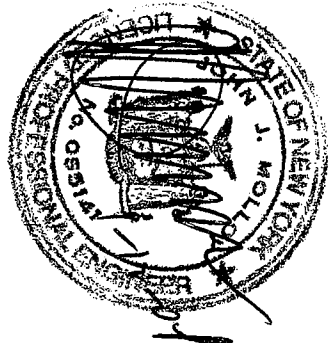
3/4" RODS (4 REQUIRED)



DETAIL "A"

TYP. ROD SUPPORT @ WALLS

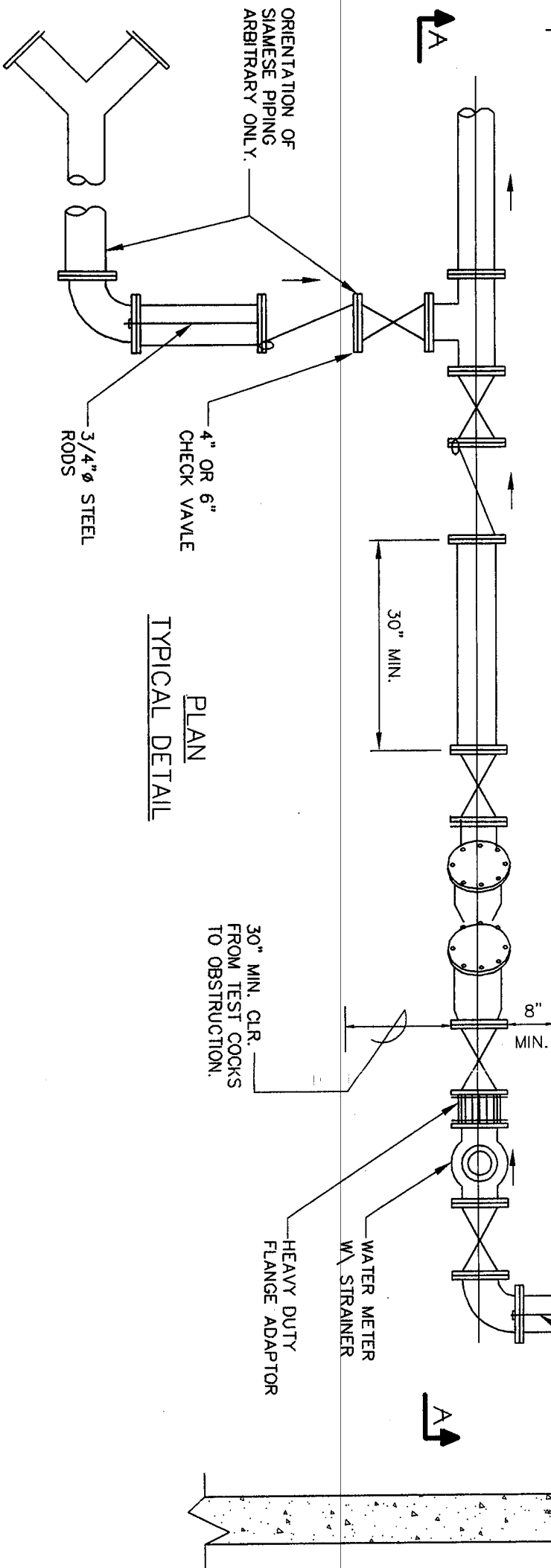
SCALE: N.T.S.



NOTES:

1. DOUBLE CHECK SHALL NOT BE SUBJECT TO FREEZING OR FLOODING. PROVIDE SPACE HEAT AS NECESSARY TO PREVENT FREEZING.
2. DOUBLE CHECK VALVE ASSEMBLY TO BE SUPPLIED BY PLUMBER.
3. DOUBLE CHECK VALVE DEVICE TO BE TESTED ANNUALLY AND SHALL COMPLY WITH ALL N.C.D.H. AND N.Y.S.H.D. REQUIREMENTS.
4. NEW SERVICE TO BE FLUSHED & STERILIZED IN ACCORDANCE WITH PREVAILING HEALTH DEPT. STANDARDS. SERVICE IS TO BE PRESSURE TESTED AT 200 PSI FOR 120 MIN. WITH NO LEAKAGE IN PRESENCE OF DISTRICT.
5. CONTACT THE WATER DISTRICT SUPERINTENDENT REGARDING APPROVED METERING DEVICES.

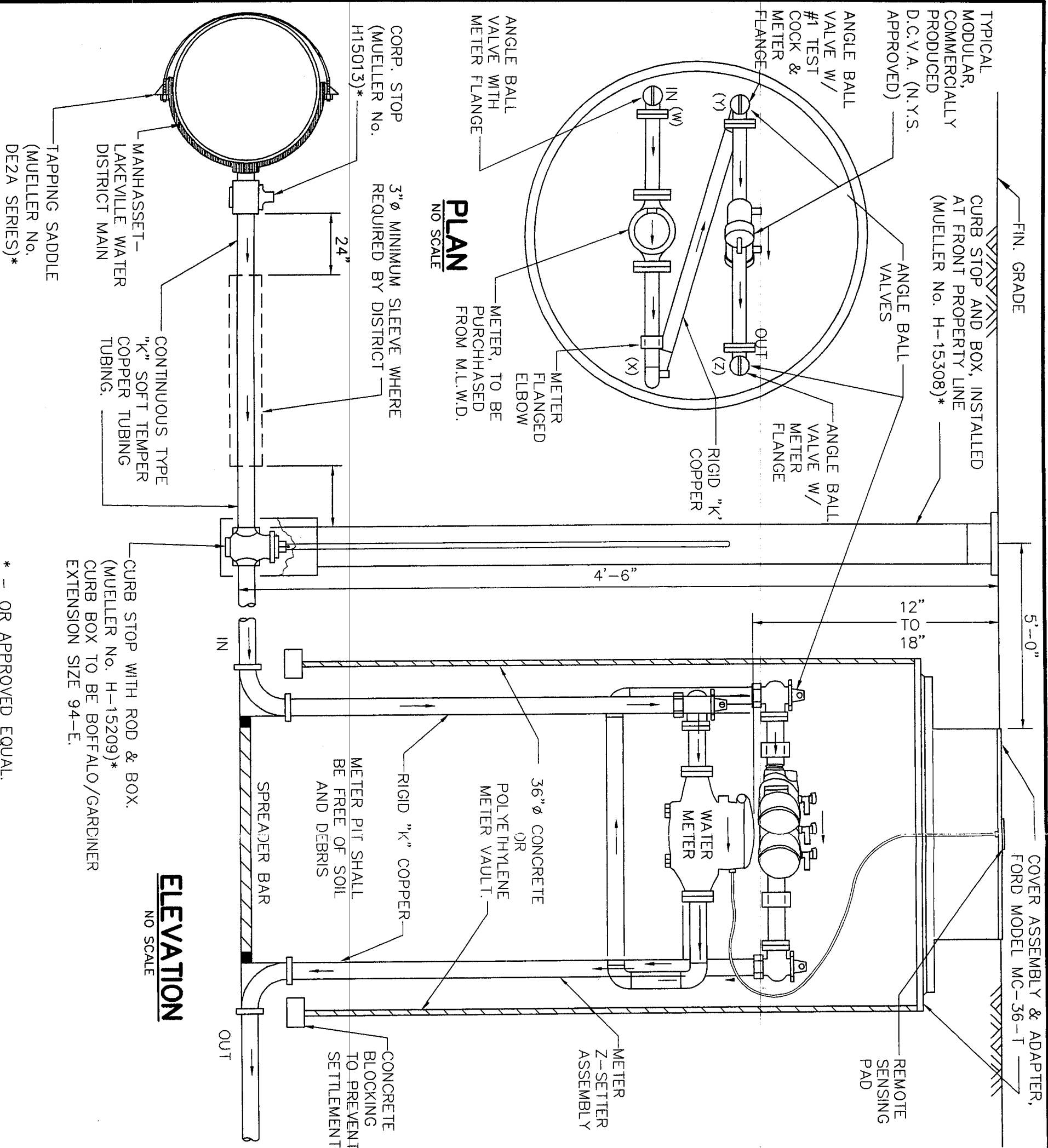
TYPICAL
PLAN
DETAIL



MANHASSET LAKEVILLE WATER

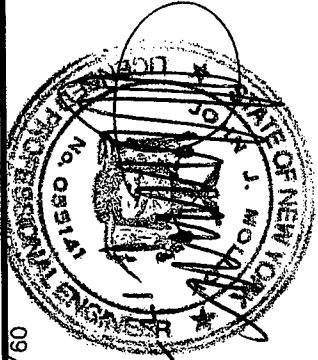
NASSAU COUNTY, N.Y.

DOUBLE DETECTOR CHECK VALVE
ASSEMBLY WITH FIRE METER
(BASEMENT SETTING)



GENERAL NOTES:

1. THE SERVICE LINE SHALL BE 1-1/2" OR 2" I.D. TYPE "K" SOFT TEMPER COPPER TUBING. THE SERVICE MUST BE ONE CONTINUOUS LENGTH FROM THE CORPORATION STOP TO CURB STOP AND ONE CONTINUOUS LENGTH FROM THE CURB STOP TO THE FIRST METER PIT FITTING. THE SERVICE SHALL HAVE 4'-6" OF COVER.
2. THE SERVICE LINE SHALL BE ENCLOSED IN A SLEEVE, NO SMALLER THAN 3" INSIDE DIAMETER, AND CONSTRUCTED OF SCHEDULE 40 P.V.C. OR GALVANIZED IRON WHEN THE SERVICE IS BENEATH PAVEMENT OR WHERE DIRECTED TO DO SO BY THE DISTRICT.
3. METER PITTS SHALL BE INSTALLED 5' INSIDE THE FRONT PROPERTY LINE AND A MINIMUM OF 5' INSIDE THE SIDE PROPERTY LINES.
4. METER PITTS SHALL NOT BE INSTALLED IN DRIVEWAYS OR PARKING AREAS.
5. THE DOUBLE CHECK VALVE ASSEMBLY MUST BE TESTED BY A NEW YORK STATE CERTIFIED BACKFLOW PREVENTION DEVICE INSPECTOR AND THE RESULTS FORWARDED TO THE DISTRICT WITHIN 30 DAYS OF INSTALLATION.
6. NO NATURAL OR MANMADE OBSTRUCTIONS (SUCH AS SHRUBBERY, RETAINING WALLS, FENCES, ETC.) SHALL BE PLACED CLOSER THAN 24" TO THE METER PIT COVER RIM.
7. UNUSUAL CIRCUMSTANCES MAY PREVENT INSTALLATION AS PRESENTED HERE. SPECIAL PERMISSION MUST BE GRANTED IN ADVANCE BY THE DISTRICT FOR ANY DEVIATION FROM THIS STANDARD DETAIL.



09/03

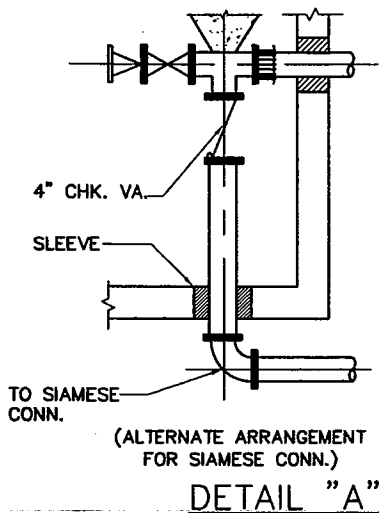
MANHASSET-LAKEVILLE
WATER DISTRICT

STANDARD DETAIL
1-1/2" & 2" WATER SERVICE
METER PIT ASSEMBLY (OUTSIDE)

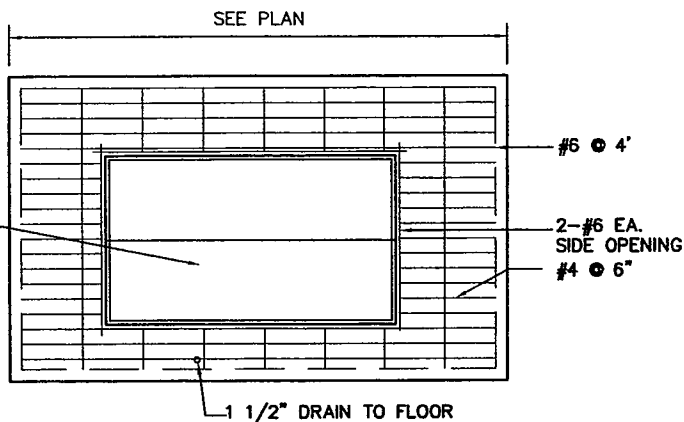
H2M GROUP

ENGINEERS • ARCHITECTS • PLANNERS • SCIENTISTS • SURVEYORS
MELVILLE, N.Y. 11761

M:\cadd\MLWD\Standards\FS_DDCV_VAULT.dwg Last Modified: Dec 29, 2003 - 5:37pm Plotted on: Dec 29, 2003 - 5:41pm By cadd114

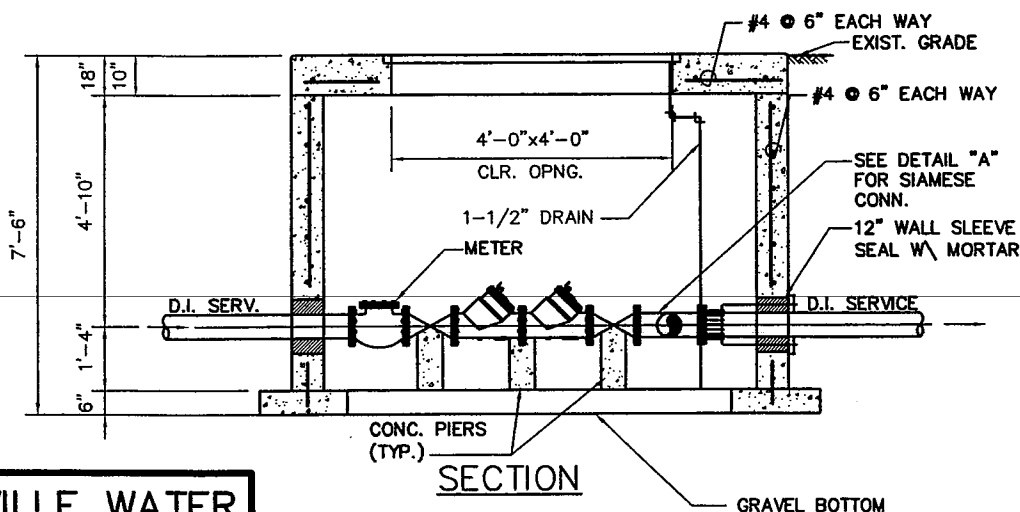
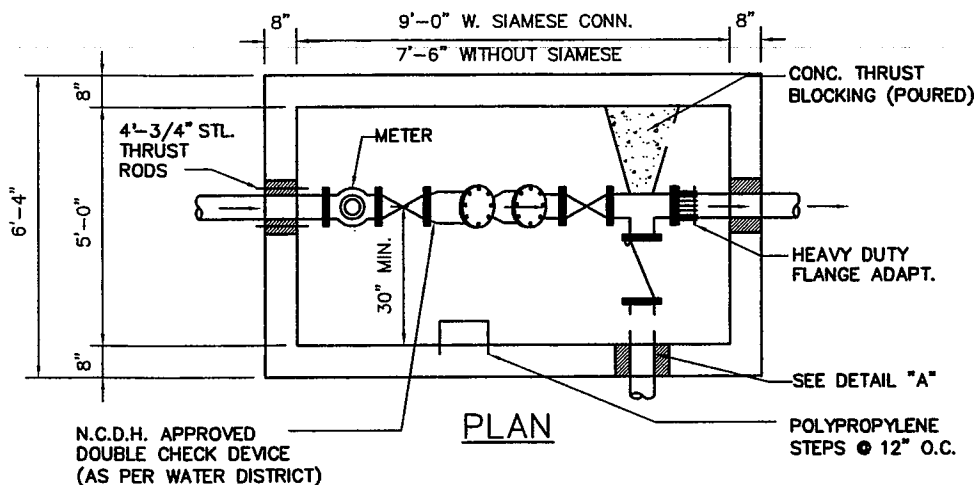


4'-0" x 4'-0" BILCO
DOOR TYPE JAL. H-20
LOAD IN TRAFFIC AREA



NOTES:

1. DOUBLE CHECK SHALL NOT BE SUBJECT TO FREEZING OR FLOODING. PROVIDE SPACE HEAT AS NECESSARY TO PREVENT FREEZING.
2. DOUBLE CHECK VALVE ASSEMBLY TO BE SUPPLIED BY PLUMBER.
3. DOUBLE CHECK VALVE DEVICE TO BE TESTED ANNUALLY AND SHALL COMPLY WITH ALL N.C.D.H. AND N.Y.S.H.D. REQUIREMENTS.
4. NEW SERVICE TO BE FLUSHED & STERILIZED IN ACCORDANCE WITH PREVAILING HEALTH DEPT. STANDARDS. SERVICE IS TO BE PRESSURE TESTED AT 200 PSI FOR 120 MIN. WITH NO LEAKAGE IN PRESENCE OF DISTRICT.



MANHASSET LAKEVILLE WATER
NASSAU COUNTY, N.Y.

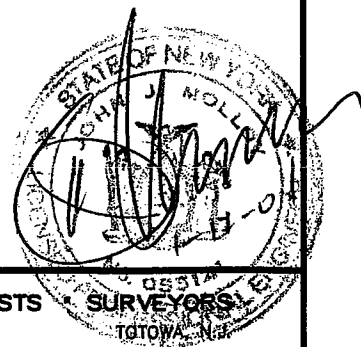
FIRE SPRINKLER SYSTEM DOUBLE
DETECTOR CHECK VALVE

2", 4", 6" & 8"
VAULT SETTING

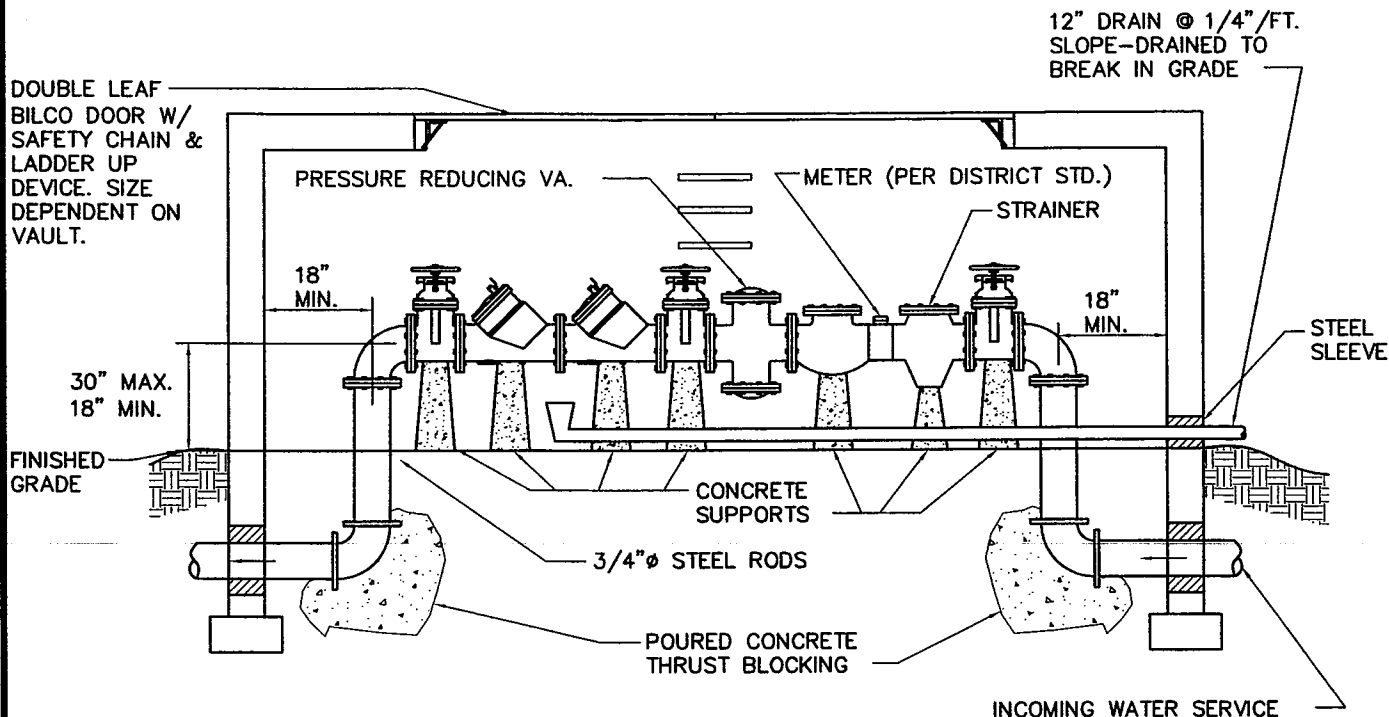
12/03

H2M GROUP

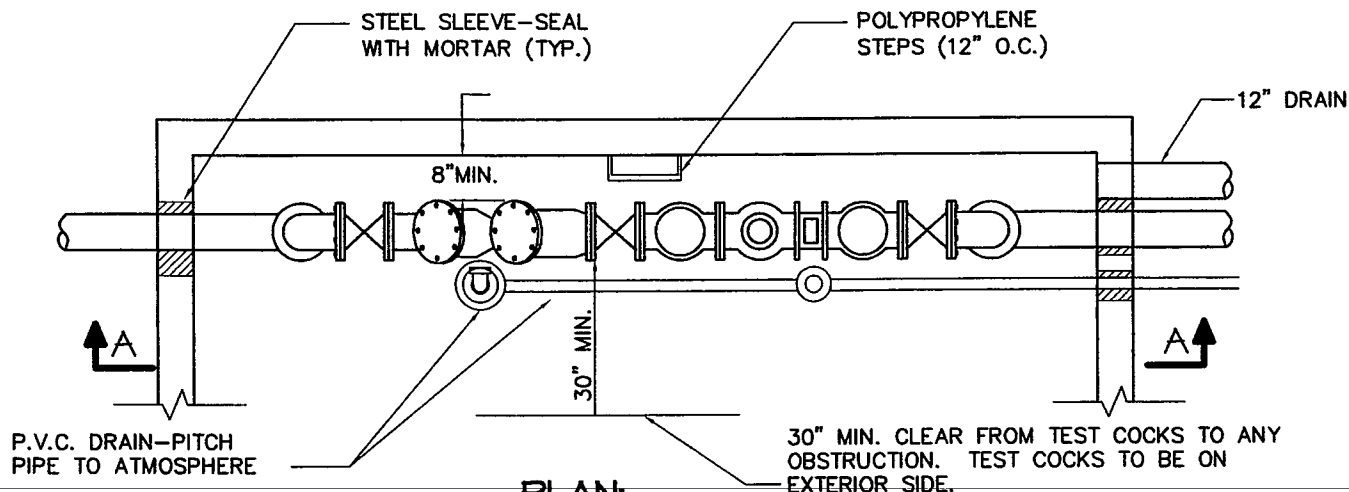
ENGINEERS • ARCHITECTS • PLANNERS • SCIENTISTS • SURVEYORS
MELVILLE, N.Y.



M:\cadd\MLWD\Standards\RPZ VAULT 3-10.dwg Last Modified: Dec 18, 2003 - 10:12am Plotted on: Dec 29, 2003 - 5:35pm By cadd114



SECTION A-A:



PLAN:

NOTES:

1. PROVIDE SPACE HEAT AS NECESSARY TO PREVENT FREEZING
2. ALL R.P.B.P. DEVICES TO BE TESTED ANNUALLY.
3. R.P.B.P. DEVICE INSTALLATIONS WILL COMPLY WITH ALL N.C.H.D. AND N.Y.S.H.D. REQUIREMENTS.
4. R.P.B.P. ASSEMBLY NOT TO BE SUBJECT TO FLOODING OR FREEZING.
5. R.P.B.P. DEVICE N.Y.S.H.D. APPROVED DEVICE INCOMING SERVICE PIPE TO BE UNBRANCHED AND UNOBSTRUCTED FROM WATER MAIN TO FIRST R.P.B.P.

**MANHASSET-LAKEVILLE
WATER DISTRICT**

STANDARD DETAIL

**3" TO 10" RPZ W/ METER
(ABOVE GRADE VAULT SETTING)**

12/16/03
06/11/03

H2M GROUP

ENGINEERS • ARCHITECTS • PLANNERS • SCIENTISTS • SURVEYORS
MELVILLE, N.Y.

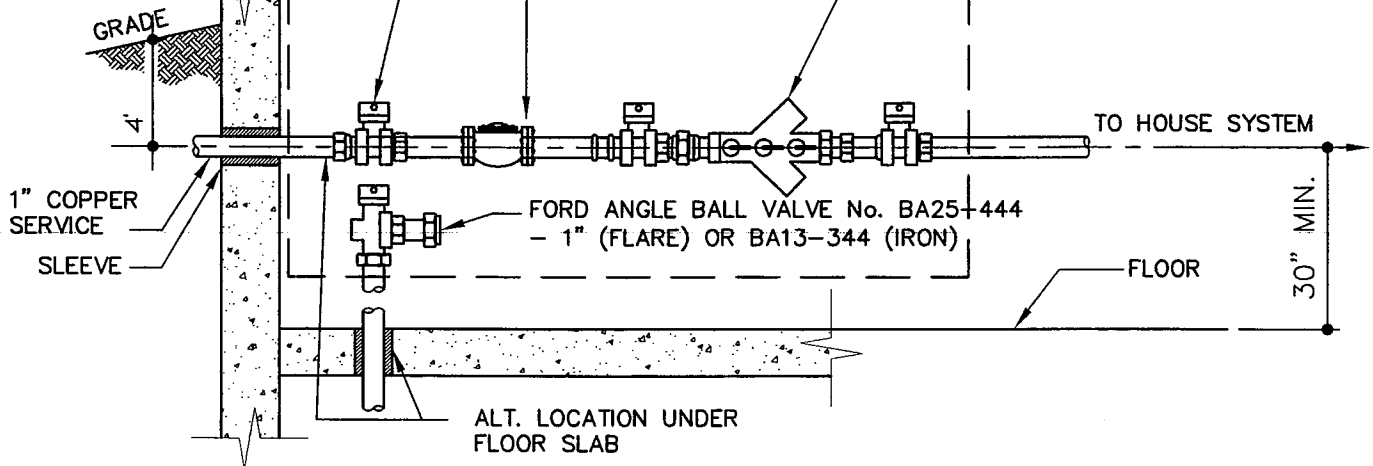
TOTOWA, N.J.

STRAIGHT BALL VALVES
CAT. No. BM-13-444-1

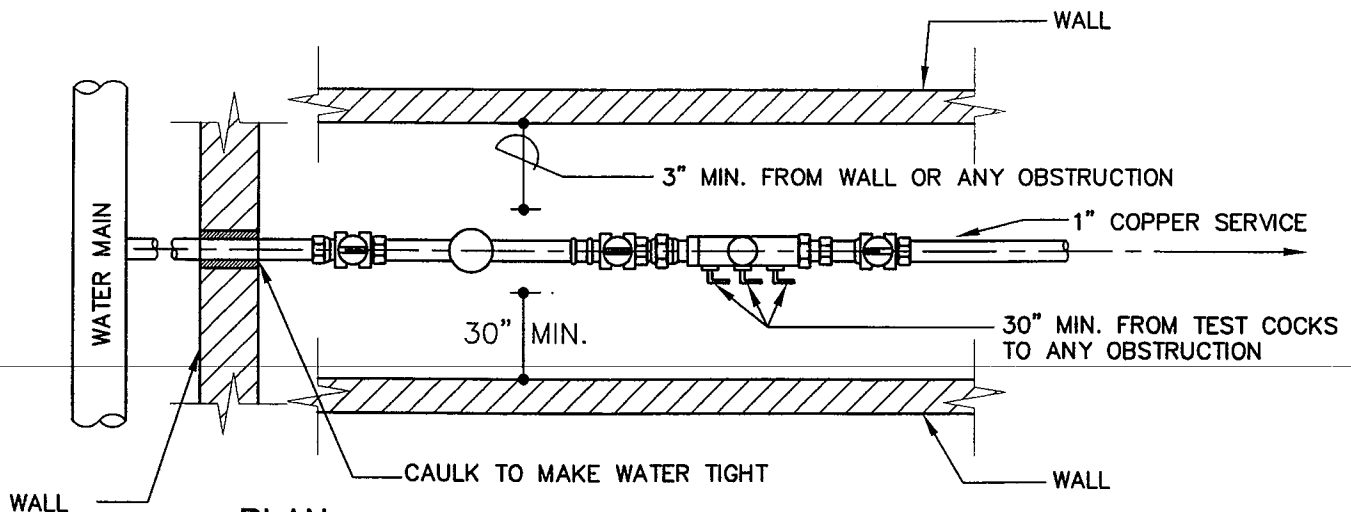
NO BRANCHED OR OBSTRUCTED PIPING FROM
DCV DEVICE TO MAIN (EXCEPT METER)

(CAN BE SET HOR. OR VERTICAL)
DOUBLE CHECK VALVE ASSEMBLY
FEBCO 805Y N.Y.S. APPROVED

* - SEE NOTE 2



ELEVATION:



PLAN:

NOTES:

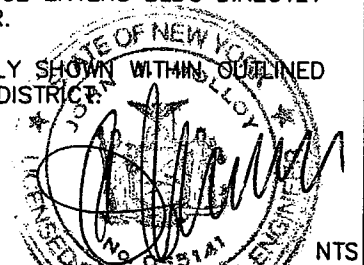
1. D.C.V. IS TO BE INSTALLED CLOSE TO WALL WHERE WATER SERVICE ENTERS BLDG DIRECTLY AFTER WATER METER.
2. OBTAIN ASSEMBLY SHOWN WITHIN OUTLINED AREA FROM WATER DISTRICT.

**MANHASSET-LAKEVILLE
WATER DISTRICT**

STANDARD DETAIL

**3/4" & 1" DOUBLE CHECK VALVE
ASSEMBLY (BASEMENT SETTING)**

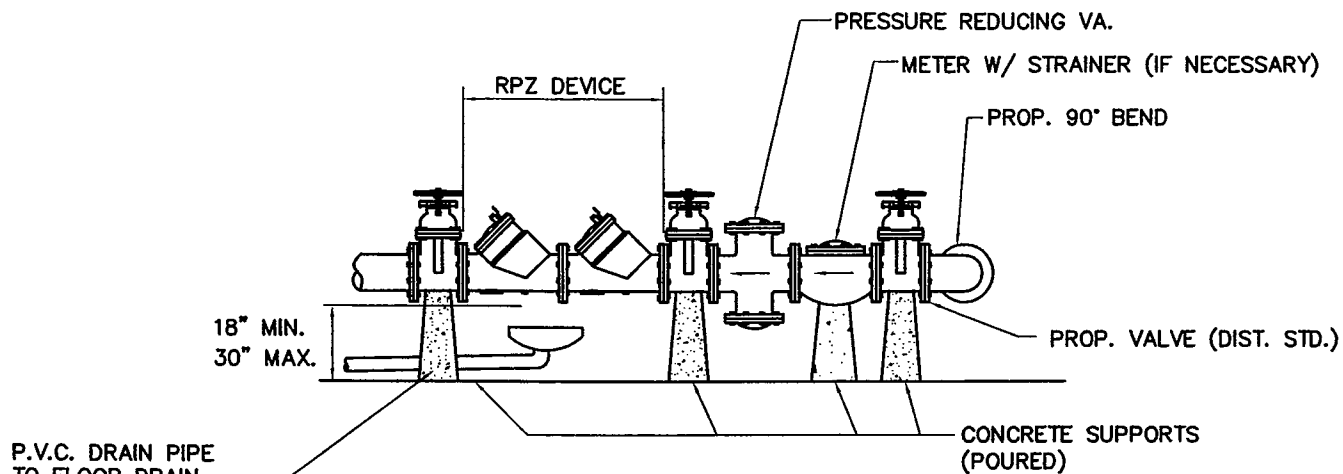
12/03
06/02



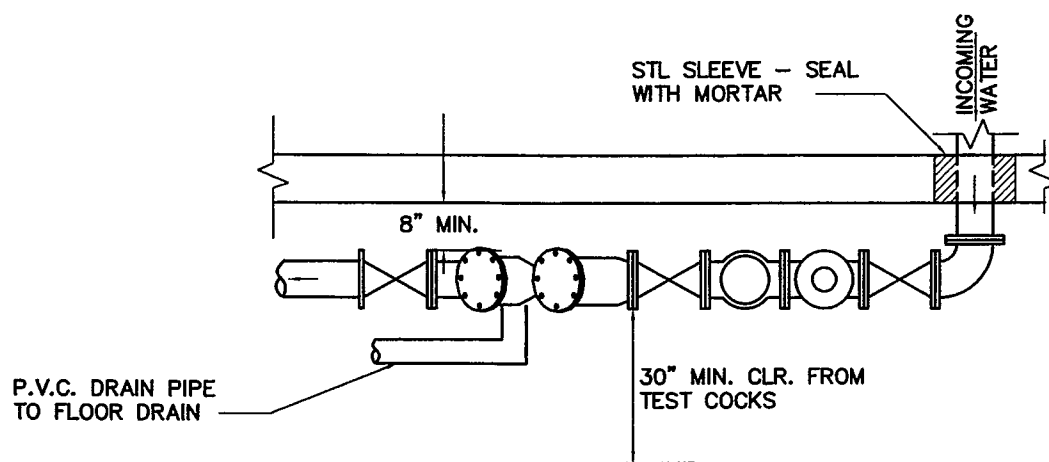
H2M GROUP

ENGINEERS • ARCHITECTS • PLANNERS • SCIENTISTS • SURVEYORS
MELVILLE, N.Y. TOTOWA, N.J.

M:\cadd\MLWD\Standards\RPZ BASEMENT 2-10.DWG Last Modified: Dec 29, 2003 - 5:40pm Plotted on: Dec 29, 2003 - 5:40pm By cadd114



SECTION A-A:



PLAN:

NOTES:

1. PROVIDE SPACE HEAT AS NECESSARY TO PREVENT FREEZING.
2. ALL R.P.B.P. DEVICES TO BE TESTED ANNUALLY.
3. R.P.B.P. DEVICE INSTALLATIONS WILL COMPLY WITH ALL N.C.H.D. AND N.Y.S.H.D. REQUIREMENTS.
4. R.P.B.P. ASSEMBLY NOT TO BE SUBJECT TO FLOODING OR FREEZING.
5. BASEMENT AREA (MUST BE > 1000 SQ. FT.) OR POSITIVE DRAINAGE MUST BE AVAILABLE TO ABOVE GRADE SUCH AS TO SIDE HILL ETC. OR IN BASEMENT ABOVE WINDOW.
6. R.P.B.P. ASSEMBLY NYSHD APPROVED DEVICE INCOMING SERVICE PIPE TO BE UNBRANCHED & UNOBSTRUCTED FROM WATER MAIN TO FIRST R.P.B.P. DEVICE.

12/16/03
06/11/03

NTS



**MANHASSET-LAKEVILLE
WATER DISTRICT**

STANDARD DETAIL

**2" TO 10" RPZ W/ METER
(BASEMENT SETTING)**

H2M GROUP

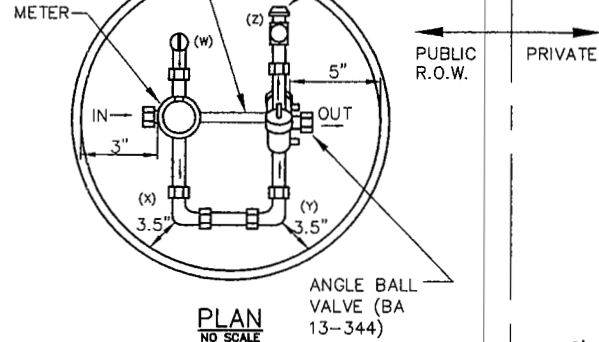
ENGINEERS • ARCHITECTS • PLANNERS • SCIENTISTS • SURVEYORS
MELVILLE, N.Y. TOTOWA, N.J.

H2M GROUP

ENGINEERS • ARCHITECTS • PLANNERS • SCIENTISTS • SURVEYORS
MELVILLE, N.Y. TOTOWA, N.J.

SPECIAL SETTER
PER M.L.W.D.
STANDARDS.

PRESSURE VALVE (BA 31-344)



ANGLE BALL
VALVE (BA
13-344)

FIN. GRADE

CURB STOP AND BOX,
INSTALLED AT FRONT
PROPERTY LINE

2"Ø MINIMUM SLEEVE,
WHERE REQUIRED BY
DISTRICT

CORP. STOP

CONTINUOUS 1"Ø
TYPE "K" SOFT
COPPER (TYP.)

MANHASSET-LAKEVILLE
WATER DISTRICT
WATER MAIN

PUBLIC
R.O.W.

PR

PRIVATE

2'-0"

21"

4'-6"

CENTER LINE OF
METER SETTER

METER PIT
SHALL BE
FREE OF
SOIL AND
DEBRIS

24"Ø x 48"
POLYETHYLENE
METER VAULT

(4) CONCRETE
BRICKS REQ'D

1" CURB STOP
WITH ROD & BOX,

LOCATION FOR
DI-ELECTRIC
FITTING

ELEVATION
NO SCALE

GENERAL NOTES:

1. THE METER AND DOUBLE CHECK VALVE (N.Y.S. APPROVED) ASSEMBLY, FEBCO 805Y SHALL BE PURCHASED FROM THE DISTRICT.
2. THE SERVICE LINE SHALL BE 1" I.D. TYPE "K" SOFT TEMPER COPPER TUBING. THE SERVICE MUST BE ONE CONTINUOUS LENGTH FROM THE CORPORATION STOP TO CURB STOP AND ONE CONTINUOUS LENGTH FROM THE CURB STOP TO THE FIRST METER PIT FITTING. THE SERVICE SHALL HAVE 4'-6" OF COVER.
3. THE SERVICE LINE SHALL BE ENCLOSED IN A SLEEVE, NO SMALLER THAN 2" INSIDE DIAMETER, AND CONSTRUCTED OF SCHEDULE 40 P.V.C. OR GALVANIZED IRON WHEN THE SERVICE IS BENEATH PAVEMENT OR WHERE DIRECTED TO DO SO BY THE DISTRICT.
4. METER PITS SHALL BE INSTALLED 2' INSIDE THE FRONT PROPERTY LINE AND A MINIMUM OF 2' INSIDE THE SIDE PROPERTY LINES, OR AS OTHERWISE DETERMINED.
5. METER PITS SHALL NOT BE INSTALLED IN DRIVEWAYS OR PARKING AREAS.
6. THE DOUBLE CHECK VALVE ASSEMBLY MUST BE TESTED BY A NEW YORK STATE CERTIFIED BACKFLOW PREVENTION DEVICE INSPECTOR AND THE RESULTS FORWARDED TO THE DISTRICT WITHIN 30 DAYS OF INSTALLATION.
7. NO NATURAL OR MANMADE OBSTRUCTIONS (SUCH AS SHRUBBERY, RETAINING WALLS, FENCES, ETC.) SHALL BE PLACED CLOSER THAN 24" TO THE METER PIT COVER RIM.
8. UNUSUAL CIRCUMSTANCES MAY PREVENT INSTALLATION AS PRESENTED HERE. SPECIAL PERMISSION MUST BE GRANTED IN ADVANCE BY THE DISTRICT FOR ANY DEVIATION FROM THIS STANDARD DETAIL.
9. HOUSE LEG SHALL HAVE A DI-ELECTRIC FITTING AS MANUFACTURED BY MUELLER Co. MODEL N-35403.



12/03
08/03

**MANHASSET-LAKEVILLE
WATER DISTRICT**

**STANDARD DETAIL
3/4" & 1" WATER SERVICE
METER PIT ASSEMBLY**